



Mollard Road Land

Land (+/-) 74.04 Acres

- Location:** – Located on the south side of Mollard Road between King Edward Street and Brookside Boulevard. Close proximity to the North West Perimeter Highway.
- Zoning:** – Currently Zoned A-Agricultural
- Available:** – (+/-) 74.07 Acres
- Sale Price:** – ~~\$888,840.00~~ **PRICE REDUCED TO \$740,700.00**
- Property Taxes:** – \$1,378.41 (2011)

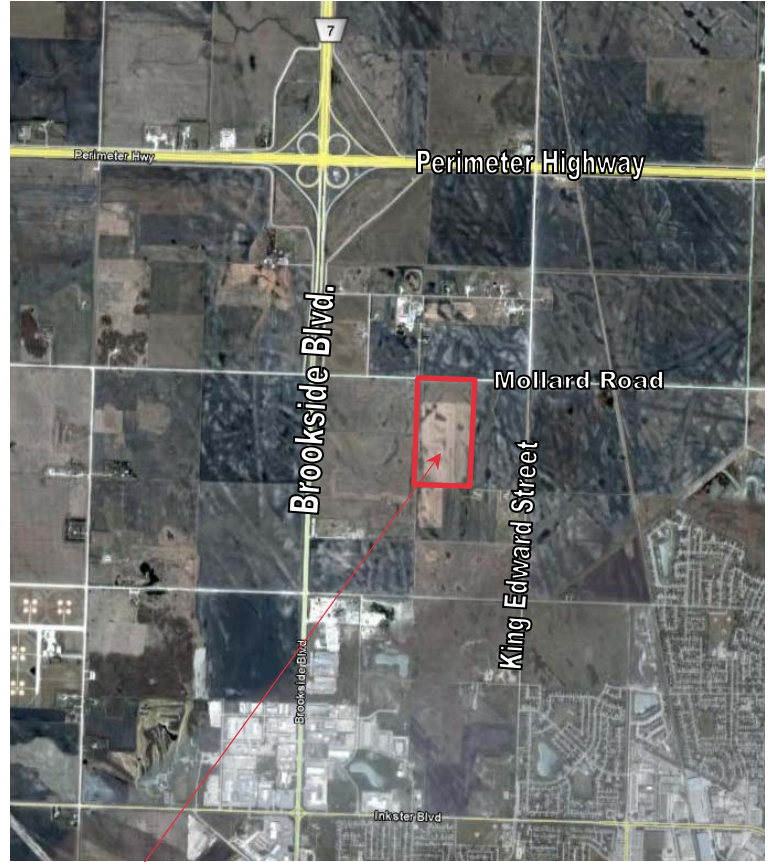
Murray Goodman
Sales & Leasing Associate
murray.goodman@dtzbarnicke.com
Direct Tel: 204 928 5009

DTZ Barnicke Winnipeg Ltd.
Sterling Lyon Business Park
Unit 5—986 Lorimer Boulevard
Winnipeg, Manitoba R3P 0Z8

Tel: 204 928 5000
Fax: 204 928 5010
www.dtzbarnicke.com

Tel: 204 928 5000

Although the information contained within is from sources believed to be reliable, no warranty or representation is made as to its accuracy being subject to errors, omissions, conditions, prior lease, withdrawal or other changes without notice and same should not be relied upon without independent verification. DTZ Barnicke Winnipeg Ltd. 2011



Mollard Road - 74.07 Acres



Murray Goodman
Sales & Leasing Associate
murray.goodman@dtzbarnicke.com
Direct Tel: 204 928 5009

DTZ Barnicke Winnipeg Ltd.
Sterling Lyon Business Park
Unit 5—986 Lorimer Boulevard
Winnipeg, Manitoba R3P 0Z8

Tel: 204 928 5000
Fax: 204 928 5010
www.dtzbarnicke.com