



27 Riverview Place, Kitchener

Available area: 3.63 acres

Location: Victoria Street North

Asking Price: \$671,550 (\$185,000 per acre)

Zoning: B-1

- Highlights:
- ◆ Park-like setting on the banks of the Grand River
 - ◆ Central location to the Kitchener-Waterloo, Cambridge, and Guelph markets
 - ◆ Zoning permits a wide range of uses
 - ◆ Call Listing Agents to discuss servicing prior to submitting all offers

Christopher Coupal

Broker, Senior Vice President
christopher.coupal@dtzbarnicke.com

Tel: 519 746 6300 ext. 238

Michael Klein, C.A., SIOR

Broker, Vice President
michael.klein@dtzbarnicke.com

Tel: 519 746 6300 x 232

**DTZ Barnicke
Waterloo Wellington Ltd.**

219 Labrador Drive, Suite 200
Waterloo, Ontario N2K 4M8
www.dtzbarnicke.com

Tel: 519 746 6300

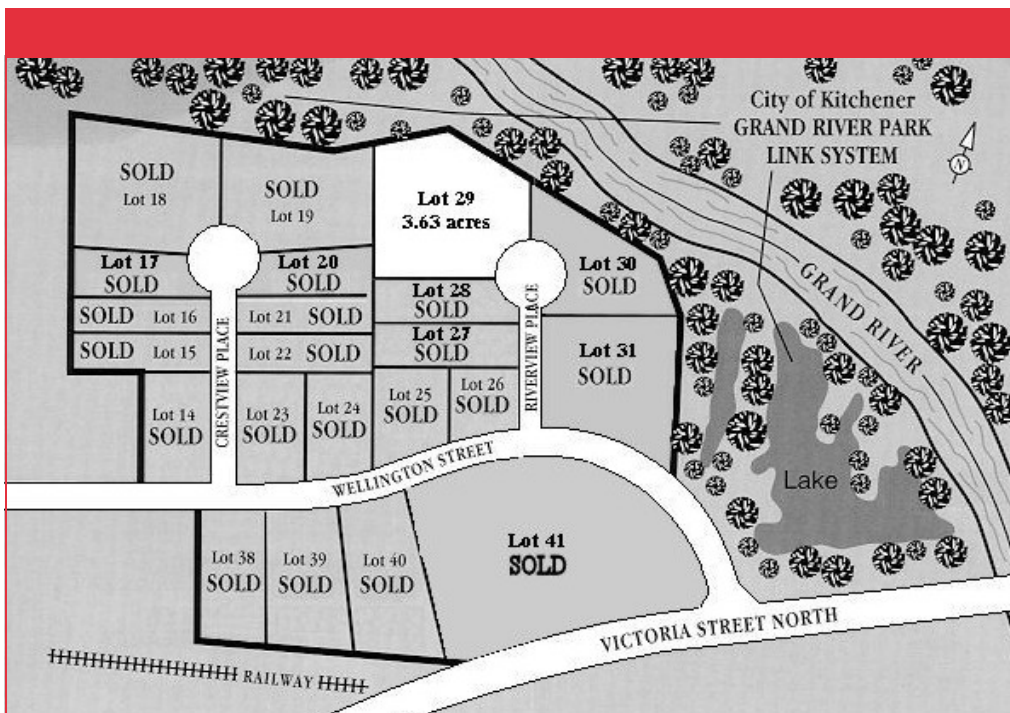
Fax: 519 746 0455

DTZ Barnicke Prestigious Grand River Business Park

27 Riverview Place, Kitchener



Only 1 lot remaining at \$185,000/acre



Christopher Coupal

Broker, Senior Vice President
christopher.coupal@dtzbarnicke.com
Tel: 519 746 6300 ext. 238

Michael Klein, C.A., SIOR

Broker, Vice President
michael.klein@dtzbarnicke.com
Tel: 519 746 6300 x 232

DTZ Barnicke Waterloo Wellington Ltd.

219 Labrador Drive, Suite 200
Waterloo, Ontario N2K 4M8
www.dtzbarnicke.com

Tel: 519 746 6300
Fax: 519 746 0455

Tel: 519 746 6300

Although the information contained within is from sources believed to be reliable, no warranty or representation is made as to its accuracy being subject to errors, omissions, conditions, prior lease, withdrawal or other changes without notice and same should not be relied upon without independent verification. DTZ Barnicke Waterloo Wellington Ltd., Real Estate Brokerage 08/2011

MLS