

3,483 sq ft
Available



250 King Street

Unit 4, 250 King Street, Spruce Grove, AB

- Located in the centre of Spruce Grove along King Street
- Immediately available 3,483 sq ft
- Net Rental Rates starting from \$17 per sq ft
- Operating Costs estimated at \$3.50 per sq ft (2010)
- City of Spruce Grove has a population of 23,326 (2009), with a primary trade market (Spruce Grove, Stony Plain and Parkland County) of 70,000+ people (2009)

Harry Song
Retail Services
harry.song@dtzbarnicke.com
Direct Tel: 780-421-7601

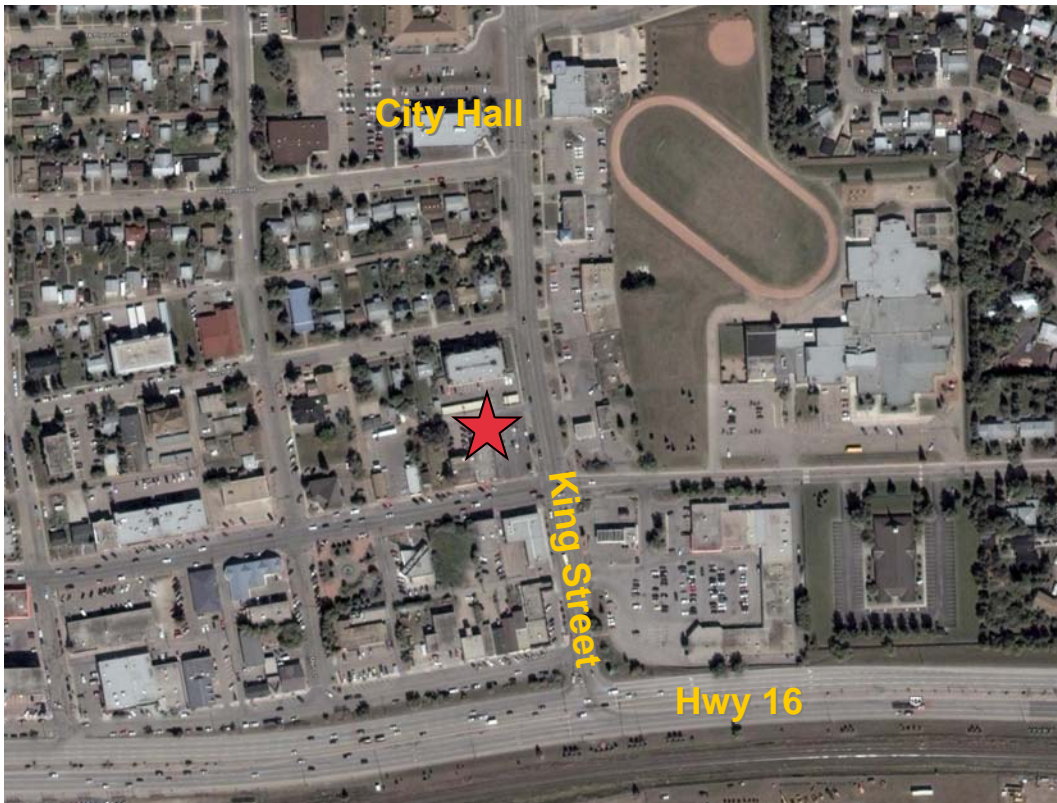
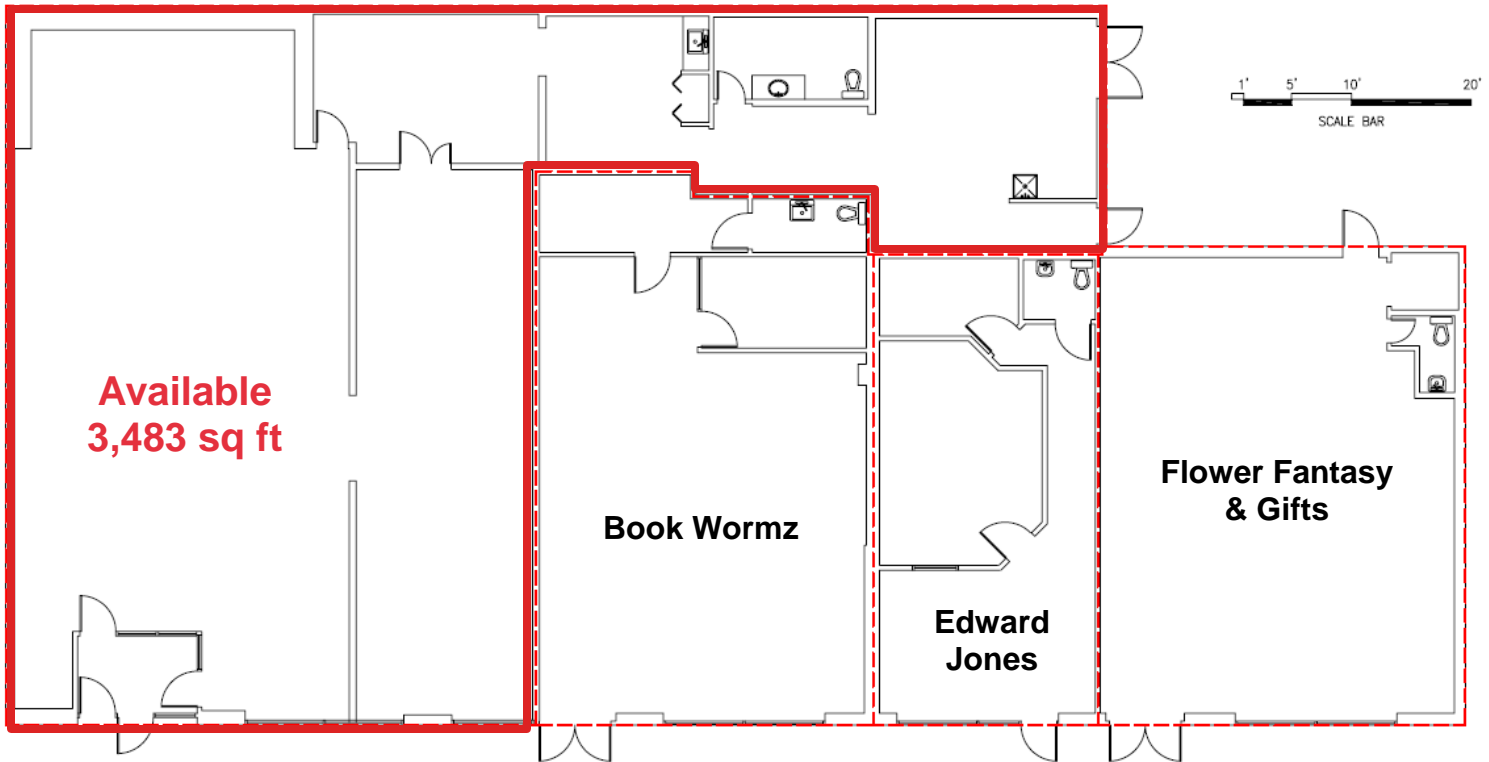
General Retail Enquires
Retail Services
780-421-1488

DTZ Barnicke Edmonton Inc.
Suite 801 The Empire Building
10080 Jasper Avenue
Edmonton, Alberta
T5J 1V9
www.dtzbarnicke.com

Tel: 780 421 1488

Retail Space For Lease

Spruce Grove, Alberta



Harry Song
Retail Services
harry.song@dtzbarnicke.com
Direct Tel: 780-421-7601

General Retail Enquires
Retail Services
780-421-1488

DTZ Barnicke Edmonton Inc.
Suite 801 The Empire Building
10080 Jasper Avenue
Edmonton, Alberta
T5J 1V9
www.dtzbarnicke.com

Tel: 780 421 1488

Although the information contained within is from sources believed to be reliable, no warranty or representation is made as to its accuracy being subject to errors, omissions, conditions, prior lease, withdrawal or other changes without notice and same should not be relied upon without independent verification. DTZ Barnicke Edmonton Inc., Real Estate Brokerage