



**90 Garry Street**  
**Office Space - 2 Units Available**

**Location:** – Rideau Towers is situated next to the historic Hotel Fort Garry in the heart of Downtown Winnipeg

**Highlights:** – Second floor and lower level office space  
 – Adjacent 3-level parkade

**Zoning:** – D - Downtown Living

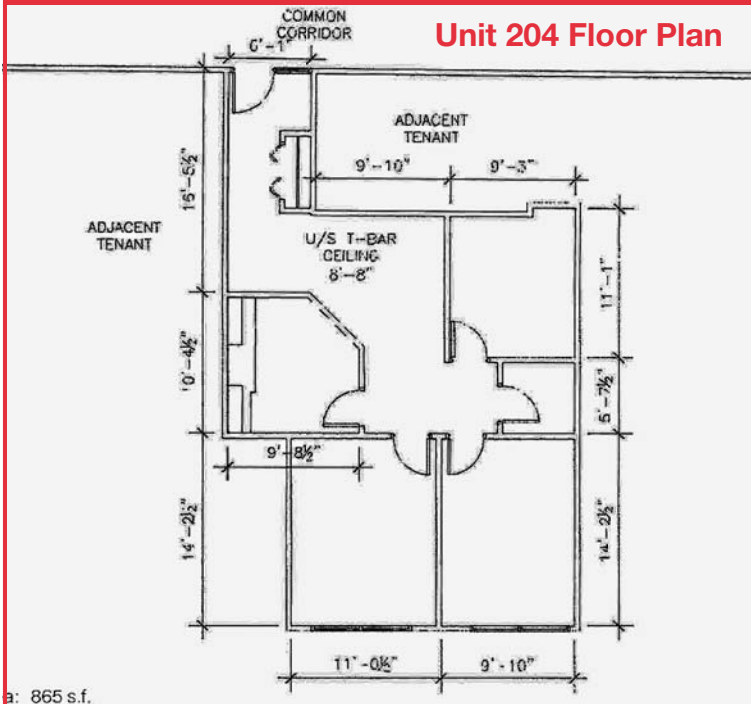
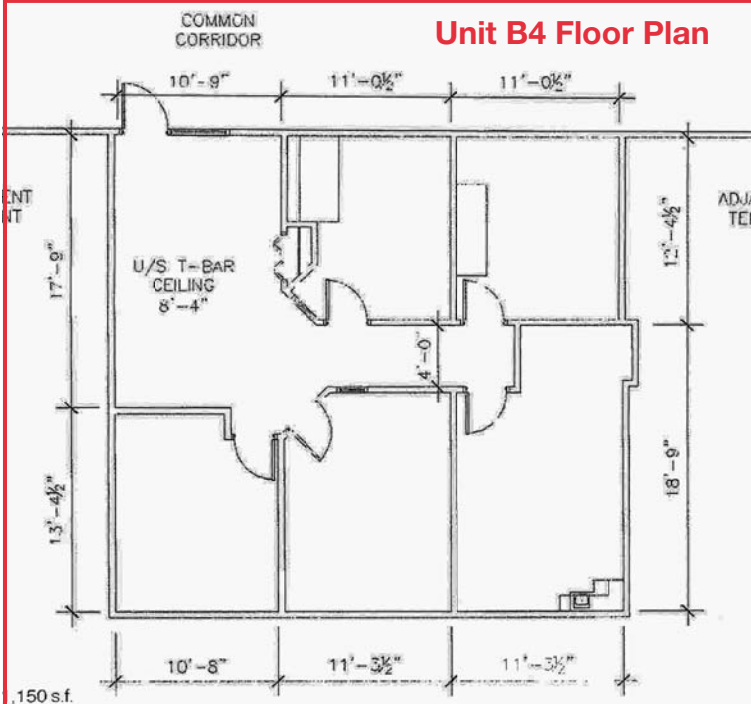
**Availability:**

| Units Available | Square Feet | Net Rent   | CAM & Tax (2011 est.) | Availability |
|-----------------|-------------|------------|-----------------------|--------------|
| Unit B4         | 1,150 sf    | \$6.00 psf | \$3.77 psf            | Immediate    |
| Unit 204        | 865 sf      | \$8.25 psf | \$4.85 psf            | Immediate    |

**Len Westwood**  
 Sales & Leasing Associate  
 len.westwod@dtzbarnicke.com  
**Direct Tel: (204) 928 5008**

**DTZ Barnicke Winnipeg Ltd.**  
 Sterling Lyon Business Park  
 Unit 5 - 986 Lorimer Boulevard  
 Winnipeg, Manitoba R3P 0Z8

**Tel:** 204 928 5000  
**Fax:** 204 928 5010  
**www.dtzbarnicke.com**



**Len Westwood**  
Sales & Leasing Associate  
len.westwod@dtzbarnicke.com  
**Direct Tel: (204) 928 5008**

**DTZ Barnicke Winnipeg Ltd.**  
Sterling Lyon Business Park  
Unit 5 - 986 Lorimer Boulevard  
Winnipeg, Manitoba R3P 0Z8

**Tel: 204 928 5000**  
**Fax: 204 928 5010**

**www.dtzbarnicke.com**