



1150 Waverley Street

Office Space - (+/-) 4,980 SF

Location: – Located near the corner of Waverley Street and Buffalo Place in SW Winnipeg

Availability:

Units Available	Square Feet	Net Rent	CAM & Tax (2010 est.)	Availability
Unit B	4,980 sf	\$13.75 psf	\$7.67 psf	Immediate

Highlights:

- Nicely built-out office space
- Professionally Managed
- Ample parking
- Landlord will consider longer term

Zoning:

- M2

Tyson Preisentanz

Sales & Leasing Associate
 tyson.preisentanz@dtzbarnicke.com

Direct Tel: 204 928 5002

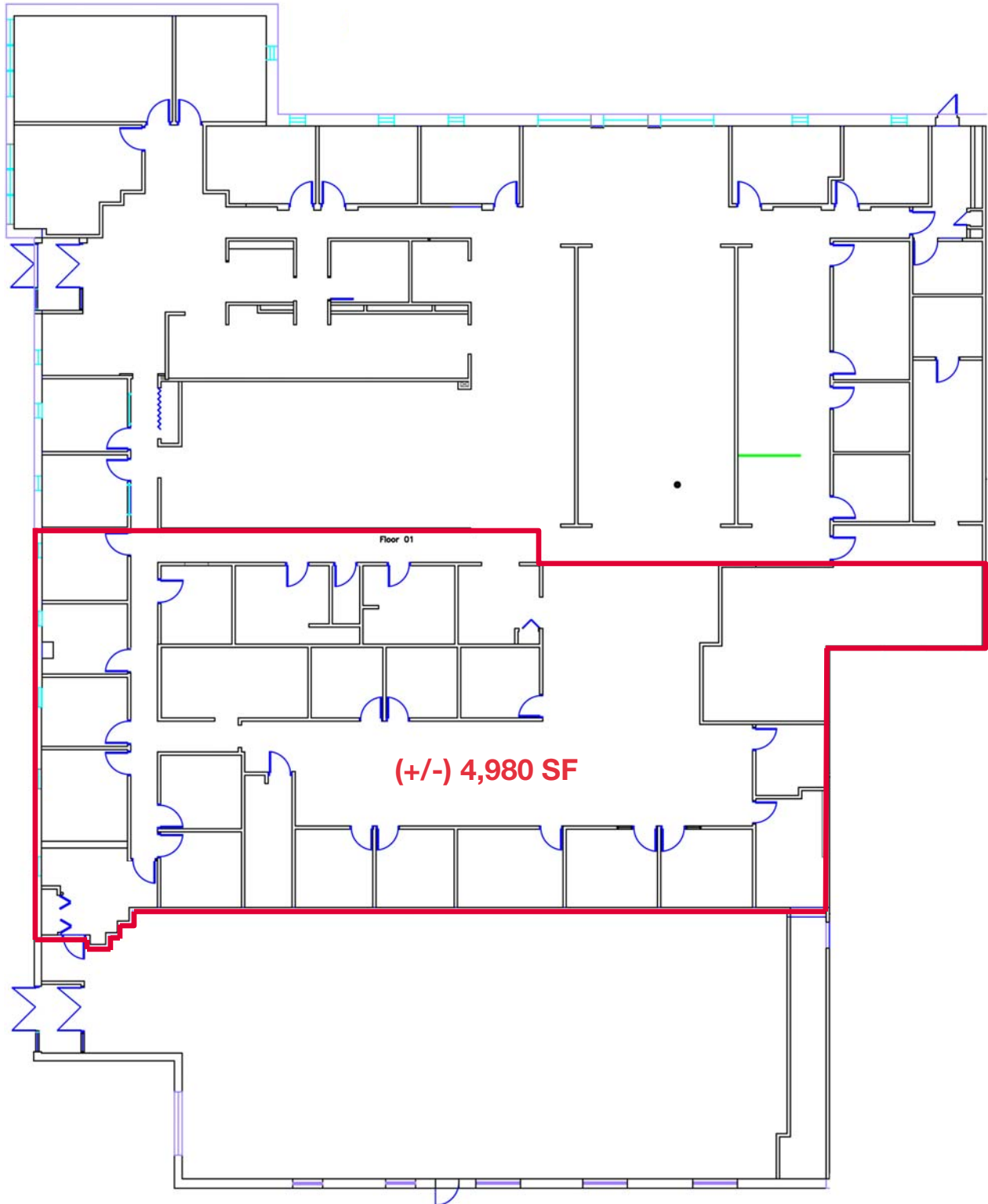
DTZ Barnicke Winnipeg Ltd.

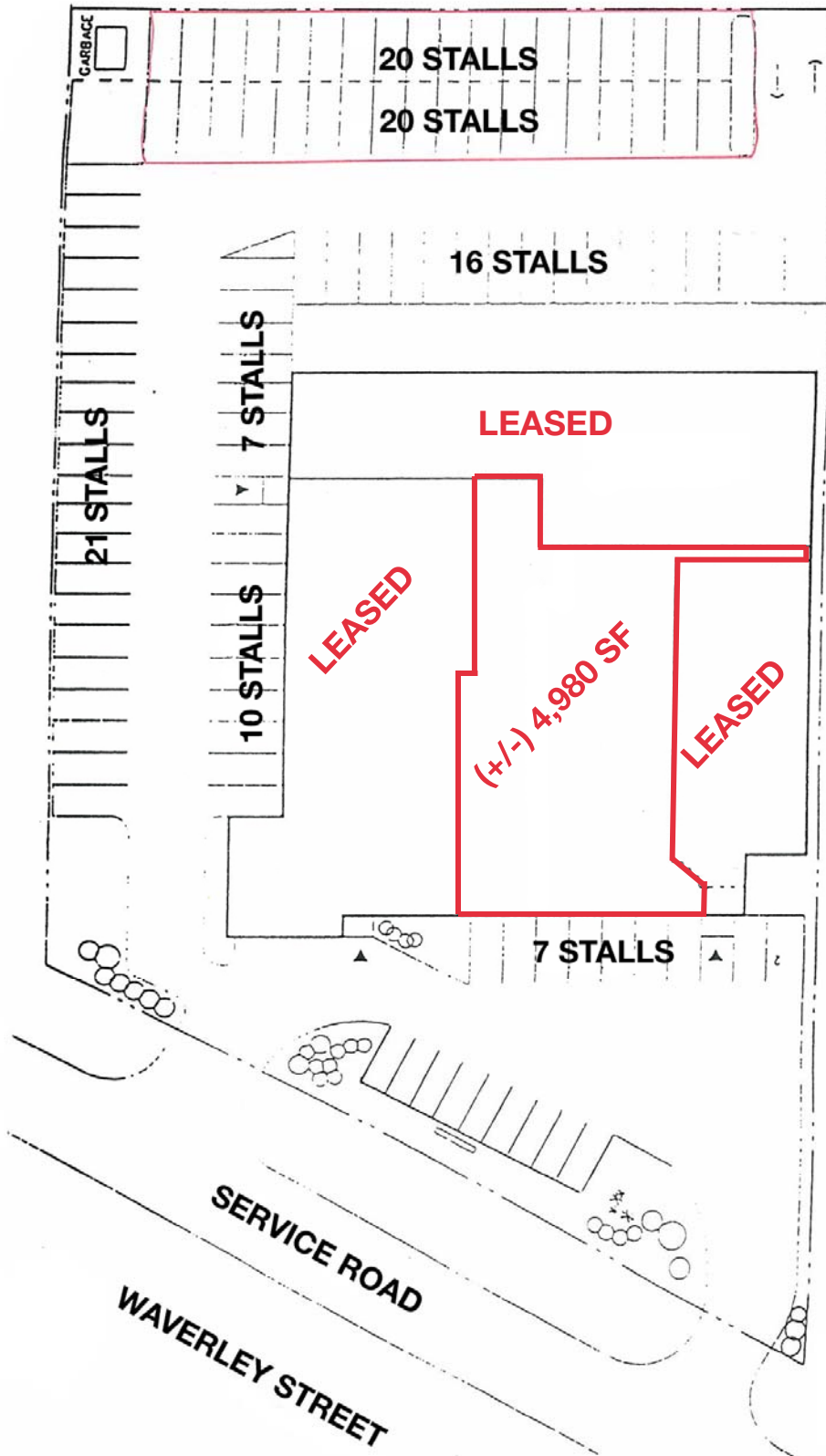
Sterling Lyon Business Park
 Unit 5 - 986 Lorimer Boulevard
 Winnipeg, Manitoba R3P 0Z8

Tel: 204 928 5000

Fax: 204 928 5010

www.dtzbarnicke.com





Tyson Preisentanz
Sales & Leasing Associate
tyson.preisentanz@dtzbarnicke.com
Direct Tel: 204 928 5002

DTZ Barnicke Winnipeg Ltd.
Sterling Lyon Business Park
Unit 5 - 986 Lorimer Boulevard
Winnipeg, Manitoba R3P 0Z8

Tel: 204 928 5000
Fax: 204 928 5010
www.dtzbarnicke.com



Tyson Preisntanz
Sales & Leasing Associate
tyson.preisntanz@dtzbarnicke.com
Direct Tel: 204 928 5002

DTZ Barnicke Winnipeg Ltd.
Sterling Lyon Business Park
Unit 5 - 986 Lorimer Boulevard
Winnipeg, Manitoba R3P 0Z8

Tel: 204 928 5000
Fax: 204 928 5010
www.dtzbarnicke.com