



J / H / F Professional Centre
4710-50 Street
6,428 Sq. Ft. of Office Space For Lease

- Newly developed building with modern architecture
- Great visibility and exposure along 50 Street
- Exceptionally located near the International Airport
- Tenant improvement allowance offered
- Free ample parking available
- Energy efficient building
- Low operating costs

*For more information contact
the advisory services team*

Cody Lowry
Office Leasing
cody.lowry@dtzbarnicke.com
Direct Tel: 780 641 0836

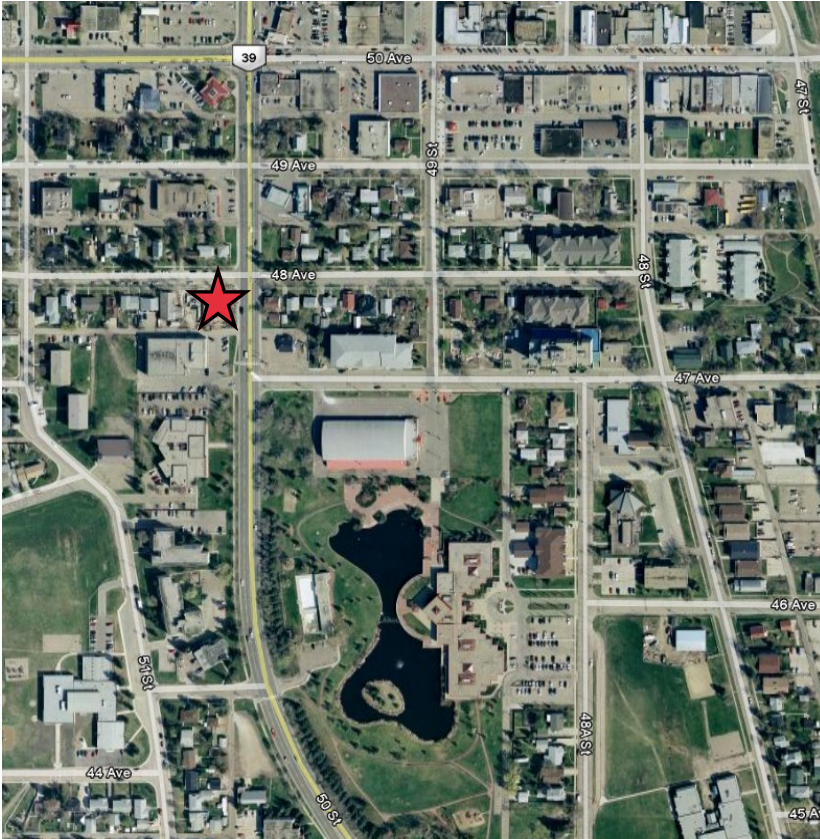
DTZ Barnicke Edmonton Inc.
Suite 801 The Empire Building
10080 Jasper Avenue
Edmonton, Alberta
T5J 1V9

Tel: 780 421 1488
Fax: 780 424 0217

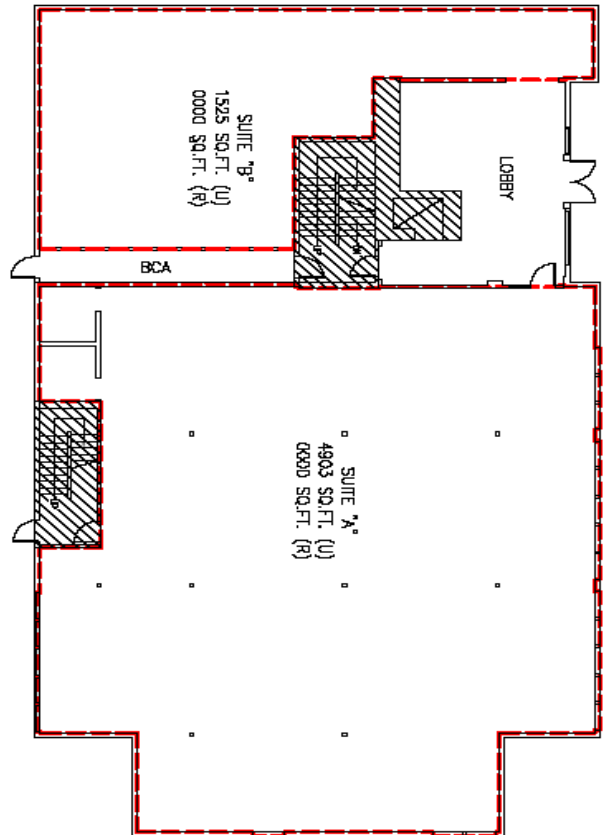
www.dtzbarnicke.com

Tel: 780 421 1488

LOCATION MAP



FLOOR PLAN-6,428 SF



LEASE DETAILS

Municipal Address:	4710-50 Street
Building Size:	23,969 Sq. Ft.
Floor:	Main Floor
Rentable Area:	6,428 Sq. Ft.
Lease Rate:	\$18.00 Per Sq. Ft.
Improvement Allowance:	Negotiable
Operating Costs:	\$6.00 Per Sq. Ft. + utilities (2010 Estimate)
Parking:	3 stalls per 1,000 Sq. Ft.
Term:	5 - 10 Years

OFFICE SPACE



Tel: 780 421 1488

Although the information contained within is from sources believed to be reliable, no warranty or representation is made as to its accuracy being subject to errors, omissions, conditions, prior lease, withdrawal or other changes without notice and same should not be relied upon without independent verification. DTZ Barnicke Edmonton Inc., Real Estate Brokerage 02/2008