



## 359 Johnson Avenue West

### Office/Warehouse/Retail

### (+/-) 1,800 SF

- Location:** – Corner of Johnson Avenue West & Levis Street by Watt Street
- Available:** – Unit A - (+/-) 1,800 sf
- Highlights:**
- Suitable for Office/Warehouse or Retail space
  - (+/-) 10' Ceiling height
  - Parking available
  - Loading available
  - Professionally Managed by: MMI Commercial Management
- Zoning:** – M1
- Lease Rate:** – \$5.50 psf Net
- CAM & Taxes:** – \$4.14 psf (est. 2010)

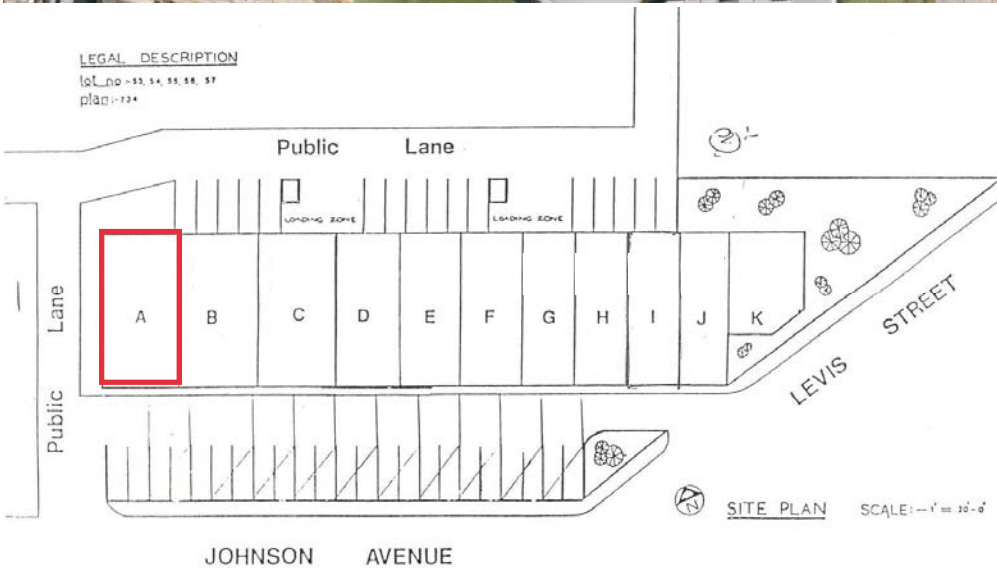
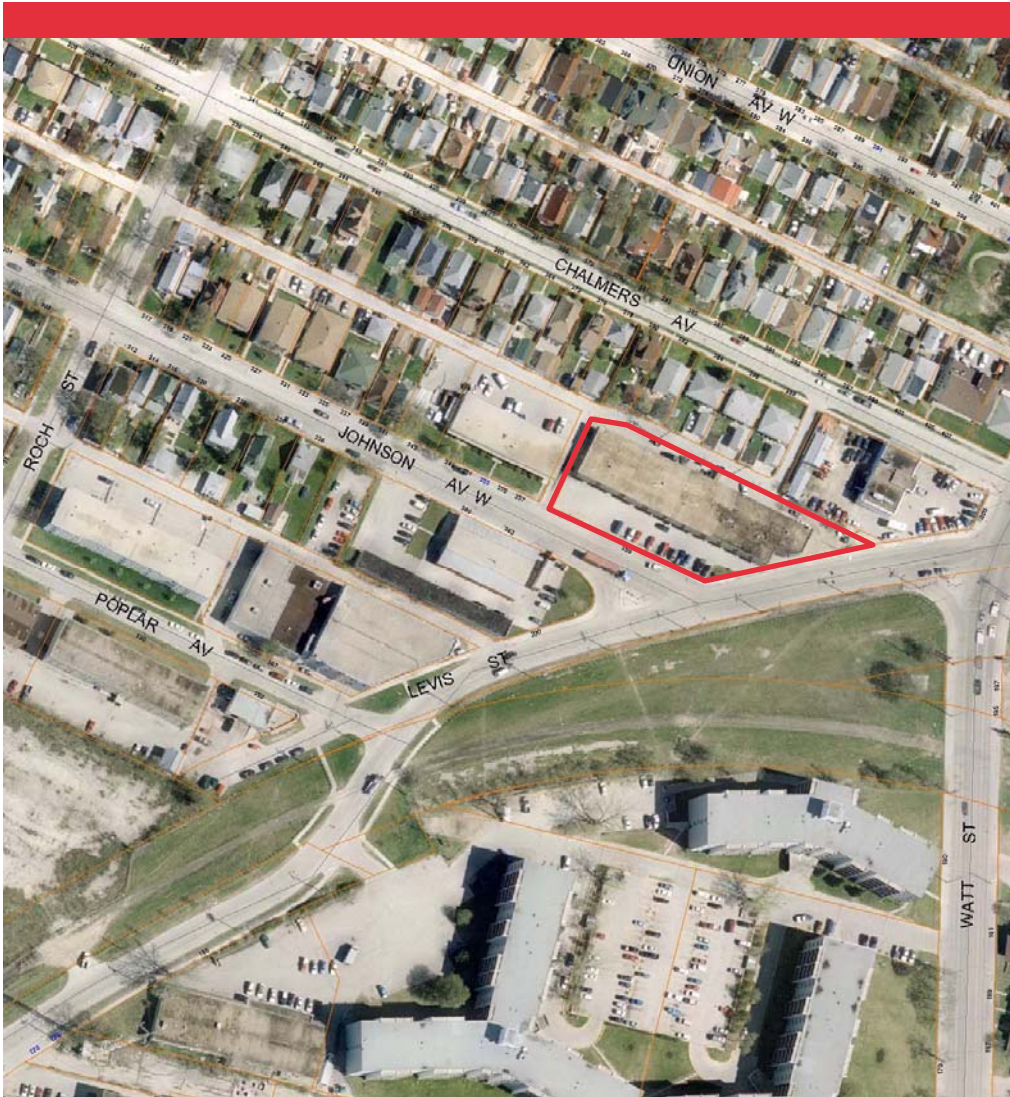
**Murray Goodman**  
Sales & Leasing Associate  
murray.goodman@dtzbarnicke.com  
**Direct Tel:** 204 928 5009

**DTZ Barnicke Winnipeg Ltd.**  
Sterling Lyon Business Park  
Unit 5 - 986 Lorimer Boulevard  
Winnipeg, Manitoba R3P 0Z8

**Tel:** 204 928 5000  
**Fax:** 204 928 5010  
[www.dtzbarnicke.com](http://www.dtzbarnicke.com)

**Tel: 204 928 5000**

Although the information contained within is from sources believed to be reliable, no warranty or representation is made as to its accuracy being subject to errors, omissions, conditions, prior lease, withdrawal or other changes without notice and same should not be relied upon without independent verification.  
DTZ Barnicke Winnipeg Ltd. 2010



**Murray Goodman**

Sales & Leasing Associate

[murray.goodman@dtzbarnicke.com](mailto:murray.goodman@dtzbarnicke.com)

**Direct Tel:** 204 928 5009

**DTZ Barnicke Winnipeg Ltd.**

Sterling Lyon Business Park

Unit 5 - 986 Lorimer Boulevard

Winnipeg, Manitoba R3P 0Z8

**Tel:** 204 928 5000

**Fax:** 204 928 5010

[www.dtzbarnicke.com](http://www.dtzbarnicke.com)