



**521 Golspie Street**  
**Office/Warehouse Space**

- Highlights:**
- Located on the corner of Golspie Street & Dobbie Avenue in East Kildonan
  - Ample Parking
  - Close to major routes
  - Amazing natural light in warehouse
  - Potential for compound
  - Clear Ceiling Heights: (+/-) 13'
- Loading:**
- Unit 1
    - 1 grade level door 10' x 10'
    - 1 dock level door 12' x 10'
- Zoning:**
- M1



**Murray Goodman**  
 Sales & Leasing Associate  
 murray.goodman@dtzbarnicke.com  
**Direct Tel: 204 928 5009**

Unit Available	SF Available	Net Rent	CAM & Tax (2010 est.)
Unit 1	6,328 sf	\$6.00 psf	\$3.25 psf

**DTZ Barnicke Winnipeg Ltd.**  
 Unit 5 - 986 Lorimer Boulevard  
 Winnipeg, Manitoba R3P 0Z8

**Tel: 204 928 5000**  
**Fax: 204 928 5010**



**Unit 1 Office/Showroom**



**Unit 1 Warehouse Space**



**Potential compound**

**Murray Goodman**

Sales & Leasing Associate

[murray.goodman@dtzbarnicke.com](mailto:murray.goodman@dtzbarnicke.com)

**Direct Tel: 204 928 5009**

**DTZ Barnicke Winnipeg Ltd.**

Unit 5 - 986 Lorimer Boulevard

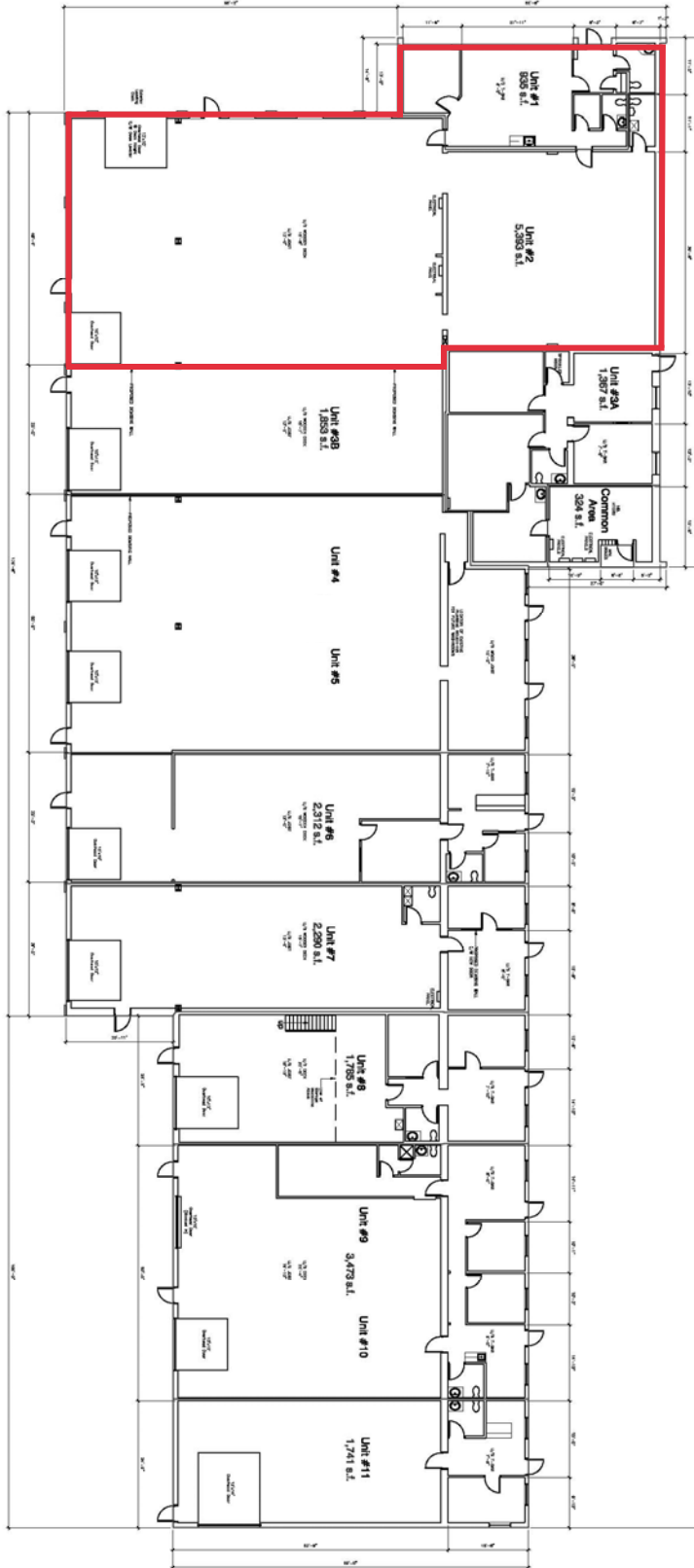
Winnipeg, Manitoba R3P 0Z8

**Tel: 204 928 5000**

**Fax: 204 928 5010**

[www.dtzbarnicke.com](http://www.dtzbarnicke.com)

Total Building Area: 25,868 S.F.



521 Golspie	SCALE: NTS DATE: Oct. 23, 2008 Drawn by: H.B.	OVERALL FLOOR PLAN	D-0
-------------	---	-----------------------	-----



